

スタディ・ビジットの成果と活用 九州工業大学の挑戦

Results & Utilization of the Study Visit
— Challenges Facing KIT —

九州工業大学
Kyushu Institute of Technology

日英高等教育プログラム公開セミナー
平成15年10月6日

Japan-UK HE Program: Open Seminar
6 October, 2003

九州工業大学のテーマ Themes of KIT

・質の保証
Quality Assurance

・産学連携
Partnership between Industries & University

サリー大学の概要

創立 工科大学(1891), 大学として認可(1966)
地理 サリー州ギルフォード
学術的規模 理学・工学から経営学・芸術学まで
人的規模 学部生7,924人, 大学院生3,895人,
 教育研究職員518人, その他の職員1,699人

九州工業大学の概要

創立 明治専門学校(1907)
 九州工業大学(1949)
地理 3キャンパス(2学部3研究科)
人的規模 学部生5000人,
 大学院生1400人, 教職員650人

UniS

Overview of KIT

Foundation: Meisen(1907), KIT(1949)
Location: 3 Campuses(2 Faculties
 & 3 Postgraduate Schools)
People Undergraduates: 5,000
 Postgraduates: 1,400, Staff :650

Established in ... 1891(College of Technology), 1966 (University)
Location Guildford, Surrey, England
Disciplines various types of engineering, education, biological and life sciences,
 nursing and postgraduate medicine, human sciences, linguistics, law,
 and international studies, as well as service-industry management,
 music and dance, and physics.
People Undergraduates: 7,924, Postgraduates: 3,895 ... as of February 2001
 Teaching & research staff: 518, Other staff: 1,699 ... as of January 2020

サリー大学の特徴

- 1 . 世界レベルの研究 (60%の教員が5または5*の評価)
- 2 . 大学卒業者への学習・研究・専門職業のための充実した教育コースの提供
- 3 . 第一級の学習設備
- 4 . 非常に高い就職率 (インターンシップの充実)
- 5 . 国際的 (多国からの留学生)
- 6 . リサーチパークを保有 (大学の収入の70%が政府外資金)

UniS

- 1 . World class research (60% of the teaching staff received review scores of 5 or 5*)
- 2 . Providing graduates with substantial educational courses
- 3 . The first class learning facilities
- 4 . Very high rate of employment (well-organized work experience)
- 5 . International nature (many oversea students)
- 6 . Owning a research park (70% of its income comes from non-government sources)

スタディビジットの成果 サリー大学(就職率英国トップ)から学んだこと

Results of Study Visit
— What we've learned from UniS



- 世界のための大学 Working for the World
- 品質保証が大学の生命線 QA: University's Lifeline
- マーケティングが基本方針 Marketing
- ベンチマーキングの設定 Benchmarking
- 教職員の能力向上 Staff Development
- 学生のキャリアアップ Students' Career Up
- 産学連携の重要性 Importance of Cooperation with Industries

質の保証

Quality Assurance

質の保証の定義

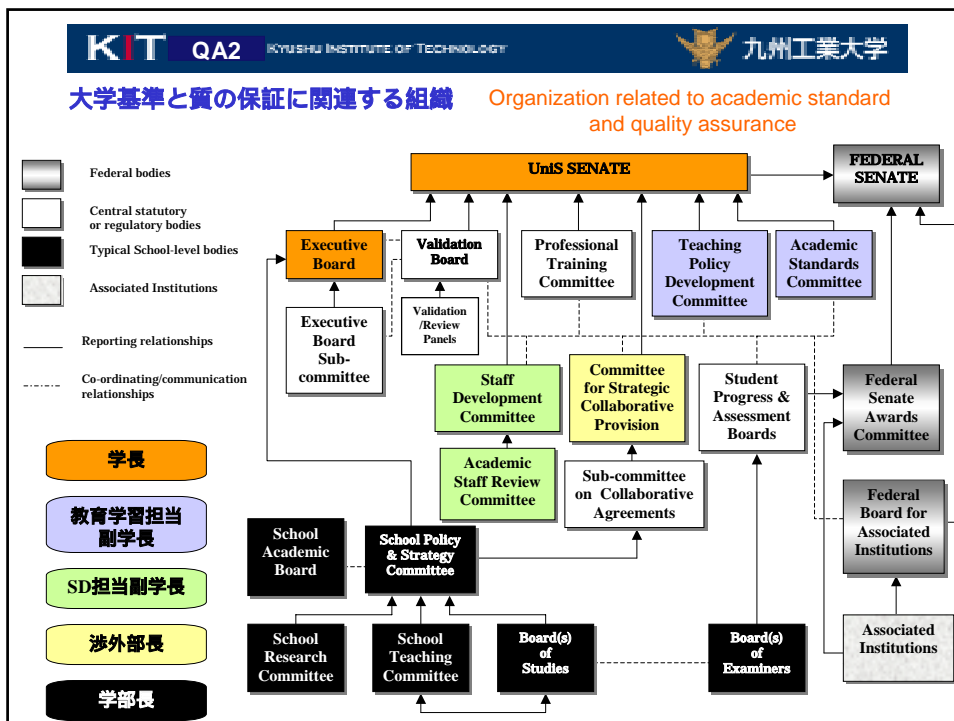
Definition of Quality Assurance

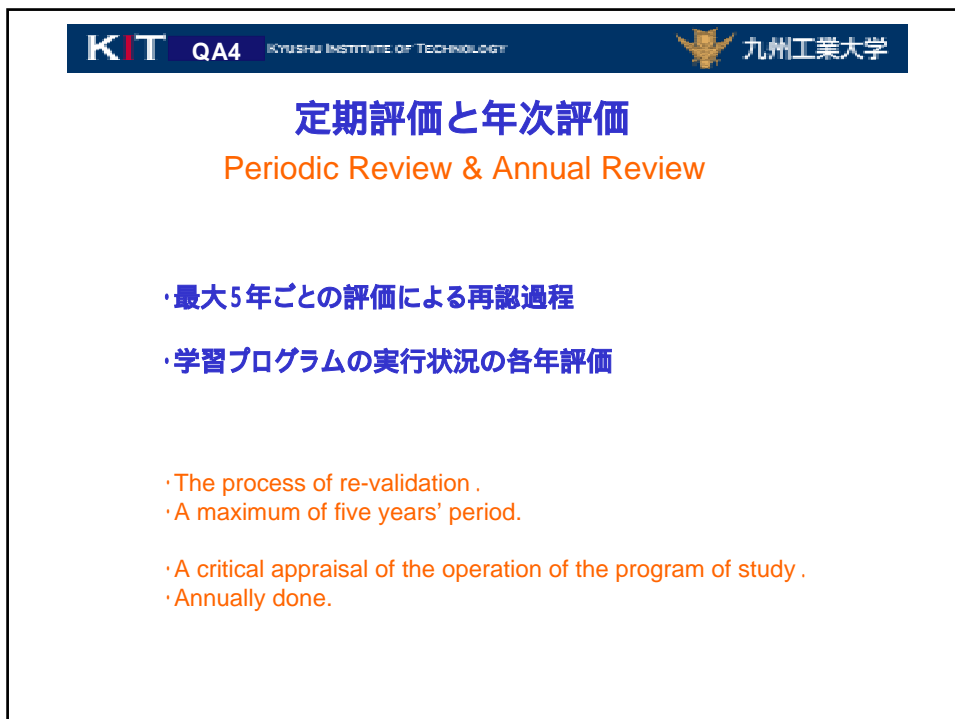
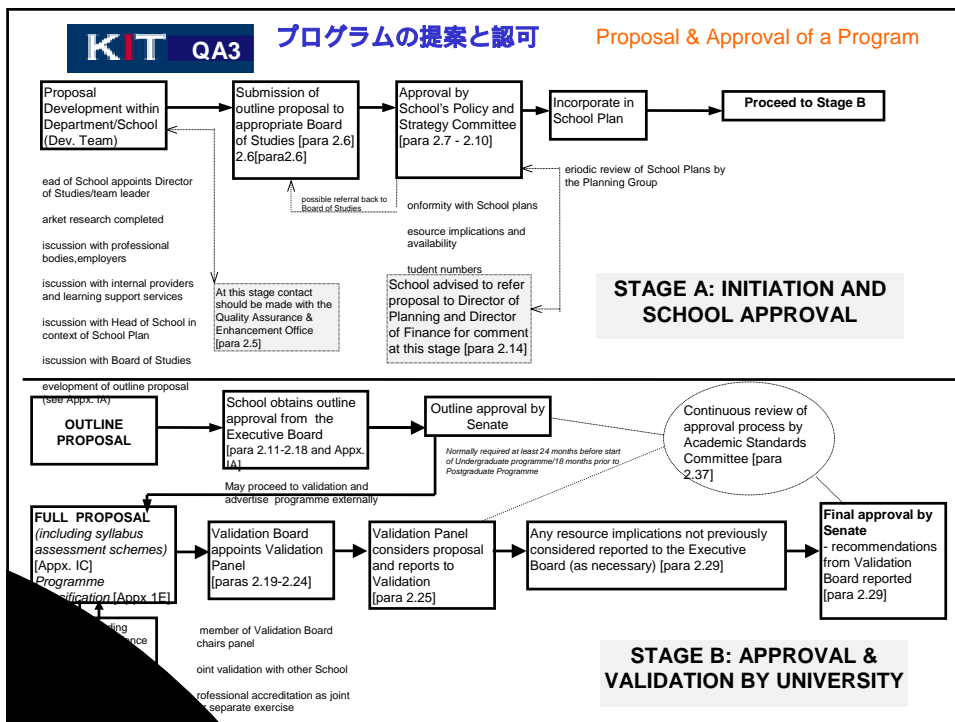
高等教育品質保証機構

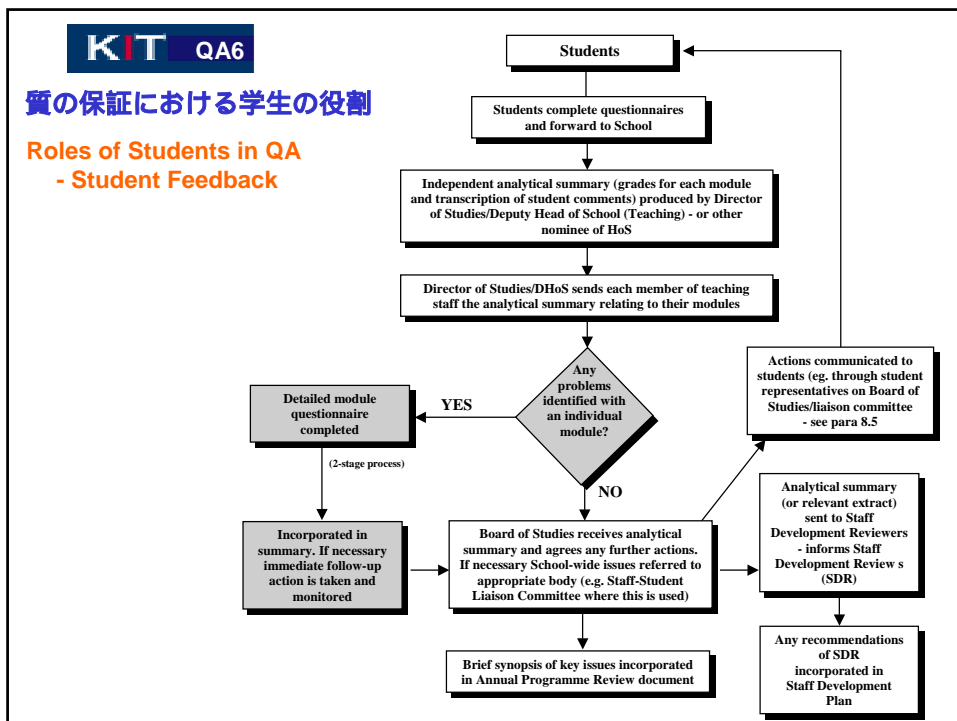
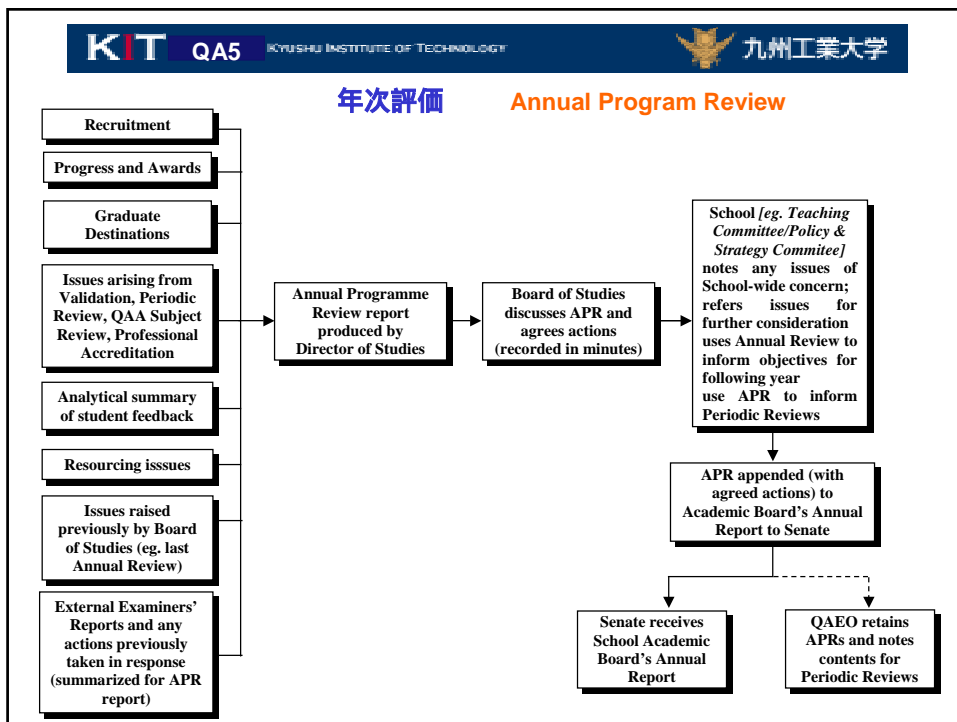
「学位等の授与組織や他の責任ある機関によって決められた方法や手続きに従って、教育プログラムや学位等の品質や大学としての基準を達成するための責務が、責任ある立場の人々によって適切に履行されていることを保証すること。」

QAA

‘Assurance that the obligation to attain university criteria and a level of quality in teaching programs and degrees is being met by people in responsible positions, based on methods and procedures established by degree-awarding organizations and other responsible agencies’.







質の保証 - まとめに代えて

QA - Impression

サリー大学が、その活動において、さまざまな特色を持つ大学に成長した理由に注目すれば、それは、サリー大学の「質の保証」システムにある。スタディ・ビジットにおいてサリー大学の複数の関係スタッフから質の保証に関する説明を受けたが、そのシステムと実効性は説得力のあるものであった。説明用のプレゼンテーションファイルも十分に整えられ、淀みない説明が行われた。その説明に「慣れ」を感じたのは、それ程に質の保証活動が業務として定着しているためであろう。

Surrey University's website states University's various unique features. In this study, however, we are more interested in focusing on the reasons why the University chose to make these statements defining features of its activities. This is largely to do with the Quality Assurance system operating within the University. Our visit to Surrey University involved meeting with various related staff and hearing their explanations of quality assurance in various contexts, and we felt that the system and its applicability are very convincing. The files used to explain the presentation were also extremely well prepared, and explanations were easy to understand. The fact that the speakers seemed used to presenting their material is a mark of the level to which they are involved in quality assurance activities as part of their daily routines.

産学連携

Partnership between Industries & University

UniSdirect

UniSdirect の機能

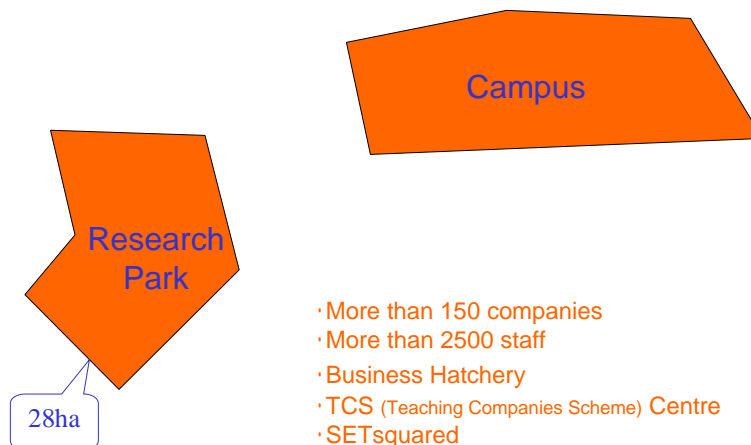
- ・企業活動やベンチャー起業の支援．
- ・研究開発から発生する知的財産の掘り起こしと保護．
- ・知的財産の活用．
- ・地域の中小企業の支援．
- ・研究開発の支援．
- ・研究開発の売り込み．
- ・政策決定の支援．

Functions of UniSdirect

- Supporting corporate and business activities, and venture startups
- Extracting intellectual property that emerges as a result of research and development, and protecting it.
- Utilizing intellectual property
- Supporting small and medium sized regional enterprises
- Supporting research and development
- Marketing research and development
- Supporting policy-making

リサーチパーク

Research Park

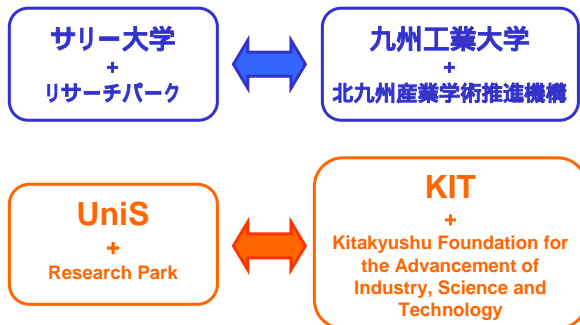


- ・More than 150 companies
- ・More than 2500 staff
- ・Business Hatchery
- ・TCS (Teaching Companies Scheme) Centre
- ・SETsquared

サリー大学との交流協定の締結

Co-operative Agreement between UniS & KIT

2003年5月28日 @九州工業大学 28 May, 2003 @KIT, Kitakyushu



KITとUniSの交流協定

Co-operative Agreement between UniS & KIT

1. 共同研究活動
2. 教育研究のための出版物及び資料の交換
3. 研究、講義及び討論のための教職員の交流
4. 勉学及び研究のための学部学生及び大学院学生の交流
5. 新産業創出と起業化活動

1. Joint research.
2. Exchange of academic material and academic publications.
3. Exchange of faculty members for research, discussion, and lectures.
4. Exchange of undergraduate and graduate students for study and research.
5. Innovation and enterprise activities.



Press Releases of UniS

UniS のプレスリリース

27th May 2003

New Landmark Agreement with Japanese Institute

At a ceremony in Japan on Wednesday 28 May, Professor Patrick Dowling, the Vice-Chancellor of the University of Surrey, will sign a landmark co-operative agreement with Professor Tatsuro Miyasato, President of the Kyushu Institute of Technology.

The agreement is the product of a close relationship which has been developing between the two institutions over the last two years. Surrey and Kyushu have many similarities. Both are at the cutting edge of technology with innovative research programmes in emerging fields. Both have high quality teaching strengths, adaptable to the changing needs of society and both are tackling the challenges of the management of intellectual property and encouraging spin-out from university expertise. Additionally both institutions have strong links with Research Parks, providing a 'seamless link' between industry and academia.

The agreement provides for the exchange of staff and students for teaching and research purposes. It also includes both Research Parks and provides for the exchange of ideas for the benefit of the institutions and their communities.

Speaking at a Special Lecture to mark the historic signing, Professor Dowling said: "I am confident that this accord will mark the beginning of a productive relationship between our two institutions. I hope we can build further on our recent exchanges across the complete spectrum, in order to share experiences and learn from each other."

SEEDA Chief Executive, Anthony Dunnett, said, "As the regional development agency for the South East of England, SEEDA welcomes the collaborative agreement between the University of Surrey and Kyushu Institute of Technology. The South East of England is already home to over 250 Japanese investors, and many of our companies, universities and research institutes are enjoying collaborative partnerships in Japan. Over 30% of Japanese companies investing in R&D in the UK come to the South East, recognising this region as Europe's premier location for international investment. I am delighted that this agreement is continuing the trend."

The University of Surrey is situated in the heart of the South East of England contributing in excess of £500 million annually to the local economy, 1.25% of the GDP of the county of Surrey. The region is amongst the most prosperous in England and benefits from its location close to the capital, London, with excellent links by air and sea. The Kyushu Institute of Technology is situated in the city of Kitakyushu, which is located midway between Tokyo and Shanghai. Kitakyushu has thrived as a gateway for trade with Asia since ancient times and today, Kitakyushu's population of one million continues to reap the benefits of proximity to the Asian continent, and the city has become one of Japan's largest centres for international trade and industry.

Press Contacts:

Liz Morgan-Lewis, Heads of Communications and Public Affairs, University of Surrey on 01483 683932 or e mail press@staff.surrey.ac.uk



サリー大学のプレスリリース

Press Releases of UniS

- ・KITとの交流協定の締結
- ・UniSとKITとの類似点
- ・協定の内容
- ・ダウリング学長の期待
- ・南イングランド開発公社の期待
- ・UniSとKITの地域経済への貢献

New Landmark Agreement with Japanese Institute (27th May 2003)

- UniS will sign a landmark co-operative agreement with KIT.
- UniS and KIT have many similarities.
- The agreement provides for
- Prof. Dowling: I am confident that this accord will mark.....
- SEEDA Chief Executive, Anthony Dunnett:
SEEDA welcomes the collaborative agreement between the University of Surrey and Kyushu Institute of Technology.
- UniS is situated contributing in excess of £500 million annually to the local economy, 1.25% of the GDP of the county of Surrey. Kitakyushu has thrived as a gateway for trade with Asia since, and the city has become one of Japan's largest centres for international trade and industry.

産学連携 - まとめに代えて

Partnership with Industries - Impression

全体的な印象として、此彼の財政規模は比べるべくもなく、また、人材配置も手厚いものがあり、産学連携に対する積極性がひしひしと伝わってきた。
北九州市や飯塚市は、地域経済の発展のために九州工業大学に大いなる期待感を持っている。
一方、サリー大学は、地域経済に大きな貢献をしているという自負を抱いている。
九州工業大学も、これら地元からの期待に答えるべく努力すべきであり、その努力が引いては大学の発展に結びつくものと確信する。

The overall impression gained was that the financial scale of the two organizations is not really comparable, and the distribution of human resources is also significantly better at Surrey. These are both reflections of the importance of industry / academia partnerships. Kitakyushu and Iizuka cities are both potentially important centers of regional economic growth that can play an important role in the future of KIT. At the same time, Surrey University is also contributing significantly to the development of the regional economy in its area. KIT must also take seriously its responsibility in this area, and we are convinced that this itself will contribute to the development of the Institute.

KITの挑戦

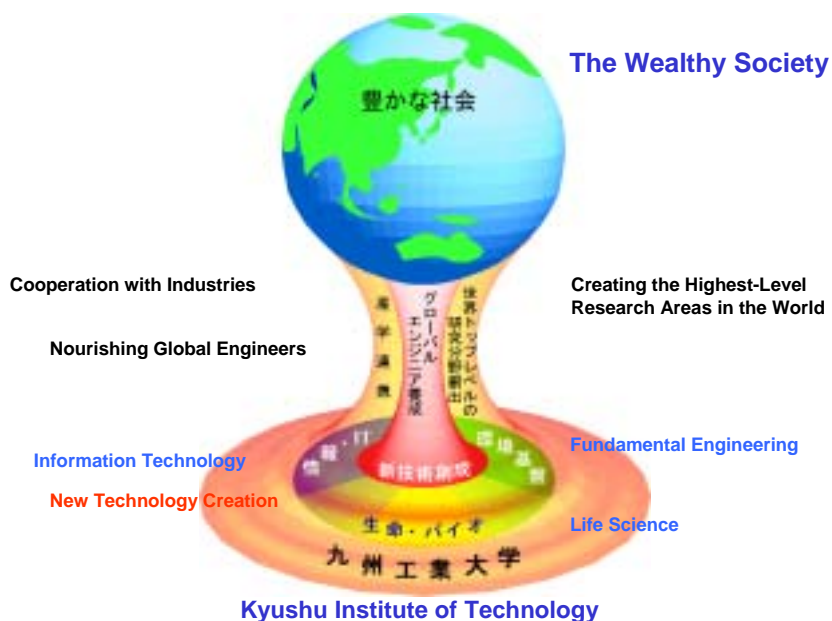
Challenges Facing KIT

KITの中期目標・中期計画

Mid-term goals & plans of KIT

1. グローバル・エンジニアの養成.
2. 世界トップレベルの研究分野の創出.
3. 産学連携を通じた社会貢献.
4. 基盤工学, 情報工学, 生命工学の相互連携と融合による新技術創成.

1. Educating global engineers
2. Producing the world-class researches
3. Contributing to the society through partnership between industries & university
4. Creating new technologies through the interaction among fundamental technology, information technology and life science



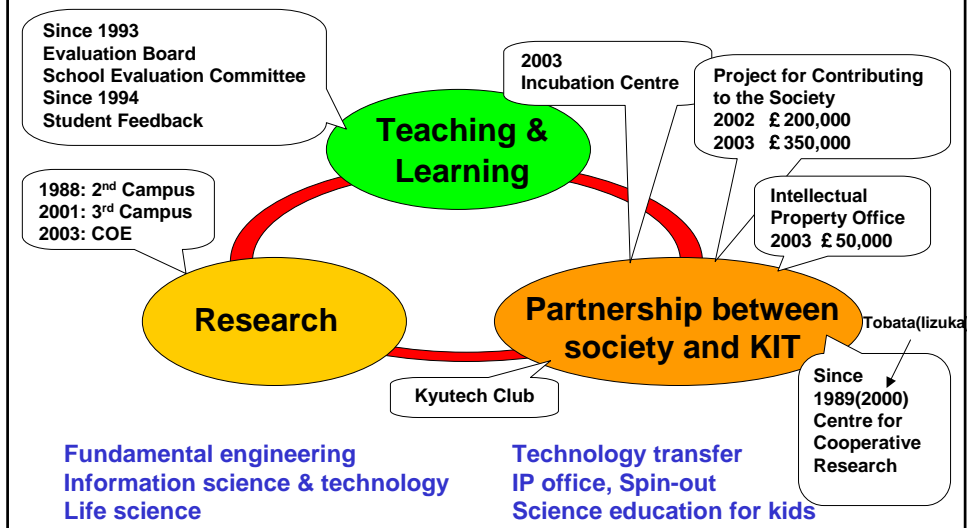
KITが目指す教育

Teaching & Learning of KIT

- ・教育活動の評価
 - ・質の保証強化室の設置
 - ・教職員の能力開発
 - ・新カリキュラムによる技能向上
 - ・E-learning の導入
 - ・教育賞の導入
-
- ・Valuing the teaching enterprise
 - ・Quality assurance and enhancement office
 - ・Staff development
 - ・Skills across the new curriculum
 - ・E-learning system (maybe in 2003)
 - ・Teaching and learning prize (maybe in 2003)

KITの活動

Activities of KIT



KITの挑戦

Challenges Facing KIT

- ・高等教育の追求・KITの独自性・
 - ・世界に貢献できる大学・
 - ・品質保証は生命線・
 - ・社会への説明責任・
 - ・学生のキャリアの向上・
 - ・マーケティングを重視・
 - ・教職員の能力向上・
 - ・産学連携を通じた社会への貢献・
- ・Pursuit of HE; realizing unique KIT.
 - ・Contributing to the world.
 - ・QA; a lifeline of KIT.
 - ・Accountability to the society.
 - ・Students career up.
 - ・Importance of marketing.
 - ・Upgrading staff abilities; SD.
 - ・Contribution to the society through partnership between industries & university.

QA 活動

Activities on QA

- QA の戦略
 - QA のための組織
 - QA の手続き
 - SD
 - 教育・学習戦略
 - サブジェクト・ベンチマーキング
 - Validation とコース精査の手続き
 - 専門職業訓練活動
- Strategy on QA
 - Organization for QA
 - QA processes
 - Staff development
 - Teaching and learning strategy
 - Subject benchmarking
 - Validation and course review processes
 - Professional training activity

サリー大学との交流促進への提案

In Order to Advance the Cooperative Agreement Between UniS and KIT

1. 共同研究活動
2. 教育研究のための出版物及び資料の交換
3. 研究、講義及び討論のための教職員の交流
4. 勉学及び研究のための学部学生及び大学院学生の交流
5. 新産業創出と起業化活動

1. Joint research.
2. Exchange of academic material and academic publications.
3. Exchange of faculty members for research, discussion, and lectures.
4. Exchange of undergraduate and graduate students for study and research.
5. Innovation and enterprise activities.

まとめ

Conclusions

- ・多様化する大学の役割への対応。
 - ・マーケット調査の重視と社会変化への迅速な対応
 - ・教育と研究を通じた社会貢献を実現できるオンリー・ワン大学への成長の必要性。
 - ・サリー大学との間の交流は、KITの今後の発展にとって重要なステップ。
 - ・より高い水準の大学活動を実現するために、質の保証システムを確立する必要性。
-
- ・Coping with a variety of university roles.
 - ・Importance of marketing and prompt reactions to social change.
 - ・Aiming at one and only university contributing to the society through education and research.
 - ・Importance of the exchange between UniS and KIT.
 - ・Need to establish a quality assurance system in order to realize higher quality in the activities of KIT.