

# 日本における外国学修履歴 出願資格審査を巡る現状と課題

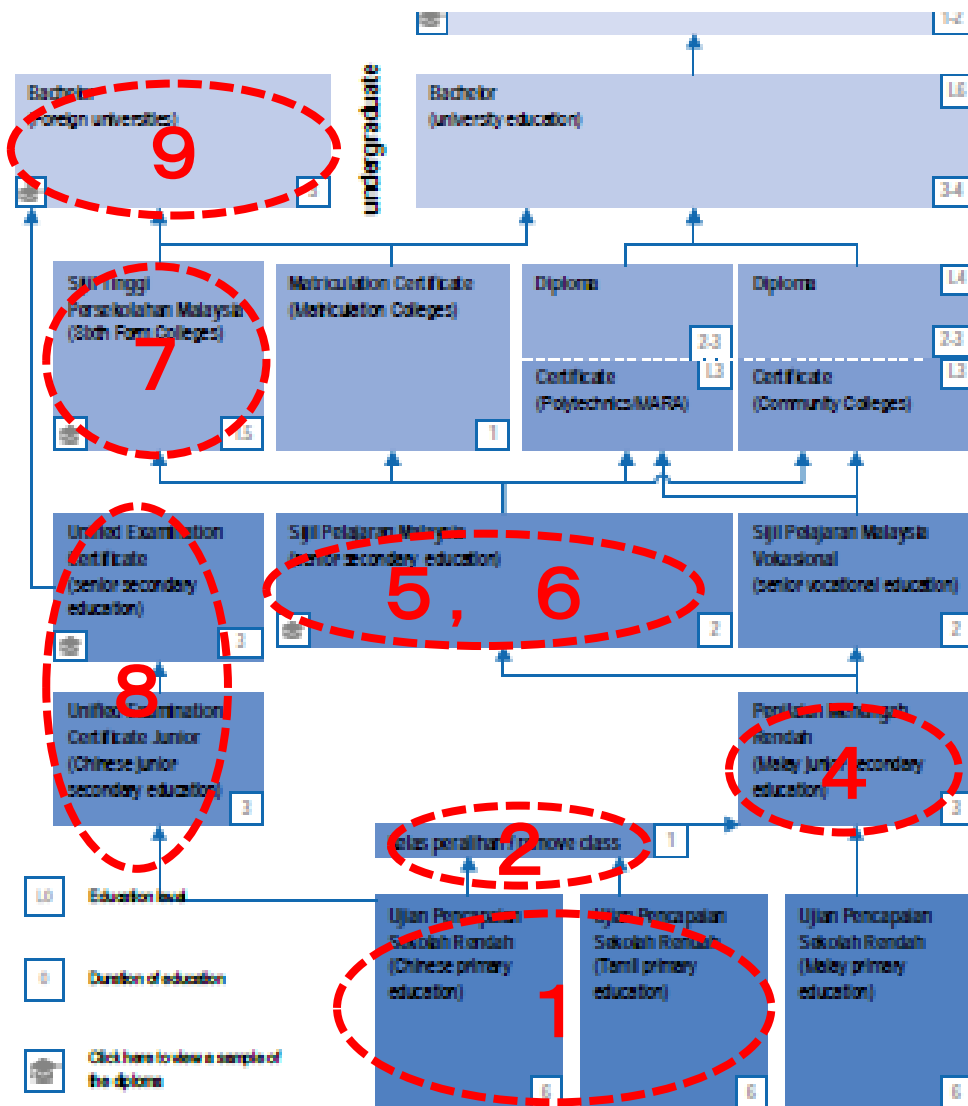
Presenter : 白 石 勝 己

理事・事務局長

公益財団法人 アジア学生文化協会

# 学歴認証問題の端緒 1

## ■1990年代後半 マレーシア 華文独立中学問題 リムーブクラス問題



1 初等教育6年間がマレー語、中国語、タミル語で提供されている。

2 中国語、タミル語初等教育終了後、マレー語中等教育へ移行するためのリムーブクラスが1年追加される。

3 中等教育は英国式の5年間である（Form5）

4 Form3終了時（前期中等教育）PMR試験を受け、普通後期中等教育と職業中等教育に進路が分かれる。

5 普通中等教育（Form5）終了時SPM試験（GCE-O）を受ける。

6 その結果でMatriculation Collegeか 6 Form College等に進学。

7 6 Form終了後STPM（GCE-A）試験を受験し大学へ進学。

8 中国語初等教育終了後、華文独立中学（前期3年 後期3年）へ進学するルートもある。日本留学組が多かった。

9 華文独中はSPM試験を受けないためマレーシア国内大学へは進学しない。

# 学歴認証問題の端緒 2

■1990年代後半 マレーシア 華文独立中学問題 リムーブクラス問題

## 日本での大学入学資格上の問題点

- 1 中国語初等教育から中等教育の間にリムーブクラスが入ると外形上 6 + 6 で12年の学校教育に見える。
- 2 日本への大学入学資格はForm6の1年目終了でOKか？
- 3 華文独立中学はSPM,STPM試験を受けないので基本的にマレーシア国内での大学進学はできない。一方で華文独中卒業生を対象としたトUNK・アブドラ・ラーマンカレッジ、新世紀学院（**New Era College**）など私立カレッジが設立されている。また、2 + 2などの海外大学連携カレッジに進学するケースもある。
- 4 華文独立中学の設置認可、教育課程、卒業認定等の主体は馬來西亞華語学校董事連合会総会（董総）である。（学校設置認可の主体）
- 5 1998年進学準備過程が申請認可制になった。（中等教育が12年に満たない国からの日本語教育機関における留学生受入れ拡大制度。それまで国内は国際学友会、東外大日本語別科のみだった）

# 卒業証明書、成績証明書の真偽判定

## 中国CDGDCとCHSI

- 1990年代から、日本語教育機関では中国の学歴真偽判定で問題を抱えていた。
- 2006年 日本語教育振興協会 高考 会考成績認証システム開始（CDGDC）
- 2009年 JAFSAが日振協と協力の下、大学における高考 会考成績認証システム開始
- 中国学歴認証機関
  - 1) CDGDC＝中国教育部学位与研究生教育发展中心  
(China Academic Degree & Graduate Education)
  - 2) CHSI＝中国高等教育学生信息网（学信网）

元々は中国国内向けの学歴判定システム

# 当協会における大学外国人留学生志願処理・学歴評価業務 1

- 2009年 国際化拠点整備事業（G30）民間セクターとの連携による大学国際化展開およびプラットフォームの構築。

採択13大学で英語コースが設置。

海外直接募集広報➡ホームページ「Japan Study Support」の強化展開  
Web出願システム

**海外から直接出願される志願書類の処理＝学歴評価  
（APO=Application Process Out-sourcing）**

- 大学の国際戦略、競争力強化＝学部における英語コースの設置（＋SGU）
- 現在4大学 1大学院 2,300件処理 （2015年度 3,500件処理体制）  
学歴判定確認、問合せが必要なものは15%～20%程度
- 海外からの直送志願書は間違いが多い。（国内は日本語学校での指導を経ている。）

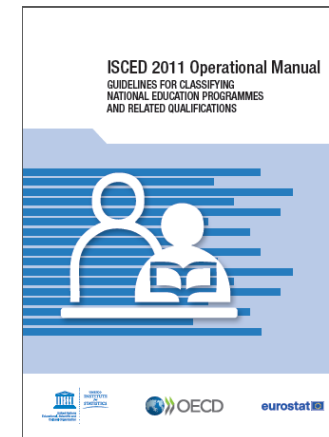
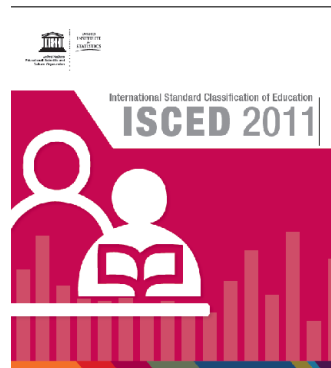
# 大学における外国人留学生志願処理・学歴評価 2

## 学歴評価手法の実際①

- 調査履歴、データがない国・地域は専用サイトで教育レベルの同等性を確認する。
- ① 学校の認証・設置認可主体はどこか？政府、地方政府、政府系団体、教育団体、International Schoolの認可状況等＝カリキュラム 卒業・修了要件 接続教育レベル等
- ② 教育資格取得、卒業の要件 高等教育進学の可能性
- ③ ソース 1：当該学校のホームページ、当該学校へ直接問合せ、当該国・地域の教育主幹部門、当該地域の受入れ大学への問合せ、在日大使館は役に立たない？
- ④ ソース 2：評価機関、国際機関等のホームページ UIS、ENIC-NARIC、NUFFIC、EUROSTAT、OECD、WES

⑤ ISCED 2011

ISCED2011 Operational Manual



# 大学における外国人留学生志願処理・学歴評価 3

## 学歴評価手法の実際② (NFFIC County Report) <https://www.nuffic.nl/en>

### Malaysia

Degree or qualification and MQF level		Dutch equivalent and NLQF level		EQF level
<i>Sijil Pelajaran Malaysia Vokasional</i>		<i>MBO diploma</i> (qualification level 1 or 2)	1/2	1/2
Diploma (community college)	4	<i>MBO diploma</i> (qualification level 3 or 4)	3/4	3/4
<i>Sijil Pelajaran Malaysia</i>		<i>HAVO diploma*</i>	4	4
<i>Sijil Tinggi Persekolahan Malaysia/Matriculation Certificate</i>		<i>VWO diploma</i>	4+	4
Unified Examination Certificate with an average score of less than 75%		at least a <i>HAVO diploma</i>	4	4
Unified Examination Certificate with an average score of 75% or higher		<i>VWO diploma</i>	4+	4
<i>Polytechnic/MARA Certificate</i>	3	2 years of HBO*	5	5
<i>Polytechnic/MARA Diploma</i>	4	3 years of HBO*	5	5
<i>Bachelor</i>	6	HBO or WO bachelor's degree	6	6
<i>Master</i>	7	HBO or WO master's degree	7	7

### Japan

Degree or qualification	Dutch equivalent and NLQF level		EQF level
<i>High School Certificate of Graduation</i> (卒業証明書 <i>Sotsugyoshomeisho</i> )	HAVO diploma	4	4
<i>Associate degree obtained at a junior college</i> (2 years)	2 years of HBO	5	5
Associate degree obtained at a junior college (3 years)	3 years of HBO	5	5
Associate degree obtained at a college of technology (5 years)	2 years of HBO	5	5
Diploma (専門士 <i>senmonshi</i> ) obtained at a professional training college (2 years)	2 years of HBO	5	5
<i>Advanced Diploma</i> (高度専門士 <i>kodo senmonshi</i> ) obtained at a professional training college (4 years)	HBO bachelor's degree	6	6
<i>Bachelor's degree</i> (学士 <i>Gakushi</i> )	WO or HBO bachelor's degree*	6	6
Bachelor's degree conferred by NIAD-UE (学士 <i>Gakushi</i> )	WO or HBO bachelor's degree*	6	6
<i>Master's degree</i>	WO master's degree	7	7

# 大学における外国人留学生志願処理・学歴評価 4

## 学歴評価手法の実際③

## The European Qualifications Framework (EQF)

Descriptors defining levels in the European Qualifications Framework (EQF)					
Level	Knowledge	Skills	Competence	Example	日本
Level 1	Basic general knowledge	basic skills required to carry out simple tasks	work or study under direct supervision in a structured context		初等教育
Level 2	Basic factual knowledge of a field of work or study	basic cognitive and practical skills required to use relevant information in order to carry out tasks and to solve routine problems using simple rules and tools	work or study under supervision with some autonomy	(UK) GCSE Grades D–G (QCF Level 1); (FI) Lower secondary school	前期中等教育
Level 3	Knowledge of facts, principles, processes and general concepts, in a field of work or study	a range of cognitive and practical skills required to accomplish tasks and solve problems by selecting and applying basic methods, tools, materials and information	take responsibility for completion of tasks in work or study; adapt own behaviour to circumstances in solving problems	(UK) GCSE Grades A*–C (QCF Level 2)	後期中等教育
Level 4	Factual and theoretical knowledge in broad contexts within a field of work or study	a range of cognitive and practical skills required to generate solutions to specific problems in a field of work or study	exercise self-management within the guidelines of work or study contexts that are usually predictable, but are subject to change; supervise the routine work of others, taking some responsibility for the evaluation and improvement of work or study activities	(UK) A-level (QCF Level 3); Abitur, Matura, vocational school	中等後非高等教育 (高等学校専攻科)
Level 5[1]	Comprehensive, specialised, factual and theoretical knowledge within a field of work or study and an awareness of the boundaries of that knowledge	a comprehensive range of cognitive and practical skills required to develop creative solutions to abstract problems	exercise management and supervision in contexts of work or study activities where there is unpredictable change; review and develop performance of self and others	(UK) HNC, HND, Foundation Degree	高等教育短期 (準学士、専門士)
Level 6[2]	Advanced knowledge of a field of work or study, involving a critical understanding of theories and principles	advanced skills, demonstrating mastery and innovation, required to solve complex and unpredictable problems in a specialised field of work or study	manage complex technical or professional activities or projects, taking responsibility for decision-making in unpredictable work or study contexts; take responsibility for managing professional development of individuals and groups	Honours bachelor's degree, Bachelor Degree without Honours, Graduate Certificate, Graduate Diploma, vocational university German State-certified Engineer, Business Manager and Designer (Fachhochschule) Bachelor, City and Guilds Graduateship (GCGI), German Fachwirt, German Operative Professional	高等教育(学士)
Level 7[3]	Highly specialised knowledge, some of which is at the forefront of knowledge in a field of work or study, as the basis for original thinking and/or research. Critical awareness of knowledge issues in a field and at the interface between different fields	specialised problem-solving skills required in research and/or innovation in order to develop new knowledge and procedures and to integrate knowledge from different fields	manage and transform work or study contexts that are complex, unpredictable and require new strategic approaches; take responsibility for contributing to professional knowledge and practice and/or for reviewing the strategic performance of teams	Masters, Postgraduate Certificate, Postgraduate Diploma, vocational university (Fachhochschule) Masters, City and Guilds (MCGI)	高等教育(修士)
Level 8[4]	Knowledge at the most advanced frontier of a field of work or study and at the interface between fields	the most advanced and specialised skills and techniques, including synthesis and evaluation, required to solve critical problems in research and/or innovation and to extend and redefine existing knowledge or professional practice	demonstrate substantial authority, innovation, autonomy, scholarly and professional integrity and sustained commitment to the development of new ideas or processes at the forefront of work or study contexts including research	Doctorate, PhD, Professional Doctorate, City and Guilds Senior Awards – Fellowship	高等教育(博士)



# 大学における外国人留学生志願処理・学歴評価 5

## 学歴評価手法の実際④

مدرسة القديسة مريم الكاثوليكية الثانوية - دبي

**ST. MARY'S CATHOLIC HIGH SCHOOL**  
DUBAI - U.A.E.

LEAVING CERTIFICATE GRADE ELEVEN ('GCSE' Level)

Student's Name [REDACTED]

Date of Birth [REDACTED] Nationality PHILIPINO Roll No. R-864

Date of joining St. Mary's SEP 2003 Date of leaving St. Mary's JUNE 2014

Subjects	Results	Subjects	Results
1. English Lang	B	7. ICT	C
2. English Lit	C	8. Bible	A
3. Mathematics	D	9. -	-
4. Physics	C	10. -	-
5. Bus. Studies	A	11. -	-
6. Economics	C	12. -	-

Character Report by Class Teacher A positive young girl who is sincere in her efforts

Date JUNE 2014

Explanation Notes and printed circular

(School Stamp)  
ST. MARY'S CATHOLIC HIGH SCHOOL  
PO BOX 52252  
DUBAI - U.A.E.

Signature of Principal

### 学生の状況

UAEドバイのカトリック系ハイスクール

離校証 Leaving Certificate

国籍 フィリピン

生年月日 1997年9月生まれ

教育資格 GCSE Level

英語試験 IELTS 8



# 大学における外国人留学生志願処理・学歴評価 6

■日本の学歴認証の問題は、受入れの入り口部分に焦点が当てられている。

■逆に、日本の大学卒の学生が留学したり、海外業務を行う場合など、大学、専門学校、高等専門学校などの卒業資格、成績表などがどう評価されるか、日本側からの積極的な発信が必要。

■日本の大学や学校を卒業した留学生にとっても重要な要素

■InboundとOutboundの両方の取組みが必要。

# Information Sources for studying in Japan-2

## JPSS1 <http://www.jpss.jp> (ABK × Benesse)

JAPAN STUDY SUPPORT for information of studying at Universities and Graduate ...

**JAPAN STUDY SUPPORT**  
Information for foreign students



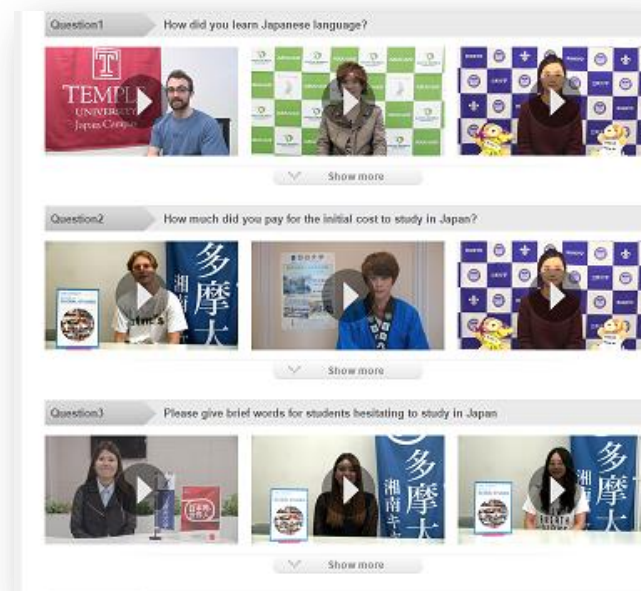
### Message from students

Listen to what students have to say on individual topics e.g.

- How did you Learn Japanese ?
- What was the best part of studying in Japan?
- Various aspects of students life in JAPAN

### Suitability Analysis 適合就讀專業之落點分析

This “Academic Suitability Check” is a diagnostic test for helping you choose a career path that matches your interests and abilities.





# Information Sources for studying in Japan-3

## JPSS2 (ABK × Benesse)

### University Data Base Admissions information

University | Graduate school | Professional training college | Junior college | All

School name  Keyword

Faculty  Department

Type of university ☐ National ☐ Public ☐ Private ☐ Japanese school of foreign university

Month of admission ☐ January ☐ April ☐ May ☐ September ☐ October

Application deadline (Month) ☒ January ☒ February ☐ March ☐ April ☐ May ☐ June ☐ July ☐ August ☐ September ☐ October ☐ November ☐ December

Examination for Japanese University Admission for International Students (EJU) ☐ Necessary. ☐ Not necessary

English examination ☐ Not necessary ☐ Necessary (by the College or University) ☐ TOEFL used ☐ TOEFL, etc. used ☐ Others

Admission to the university before entering Japan ☒ Possible to apply directly from outside of Japan, and unnecessary to visit Japan for the exam ☐ Taking the exam in Japan, though possible to apply directly from outside of Japan

Subject ☒ Search by subject ☐ Search from map

Search by learning field and area.

Shows a school list. Enter a school name or keyword and Click!

Search by subject

Humanities	Science	Humanities & Science
<ul style="list-style-type: none"><li><a href="#">Literature</a> Approaching humanity and human society through the study of culture.</li><li><a href="#">Language</a> Studying the languages and cultures of foreign countries to gain international understanding.</li><li><a href="#">Law</a> Creating social order and pursuing the happiness of human beings.</li><li><a href="#">Economics, Management, Commerce</a> Exploring social trends through</li></ul>	<ul style="list-style-type: none"><li><a href="#">Nursing and Health Sciences</a> Studying the promotion of health and the prevention of diseases.</li><li><a href="#">Medical and Dental Sciences</a> Obtaining the knowledge and skills to become a doctor.</li><li><a href="#">Pharmacy</a> Studying the administering of medicine towards obtaining qualification as a pharmacist.</li><li><a href="#">Physical Science</a> Exploring the natural substances that are the basis of technological developments.</li></ul>	<ul style="list-style-type: none"><li><a href="#">Teacher training, Education Science</a> Learning about the essence of education as well as method for helping students grow.</li><li><a href="#">Life Sciences</a> Analyzing various aspects of daily life to realize better living.</li><li><a href="#">Arts</a> Cultivating one's sensibilities and enhancing expressive abilities.</li><li><a href="#">Integrated Science</a> Approaching social problems by thinking free from restraints.</li></ul>

[Economics, Management, Commerce](#)

<a href="#">Economics</a> Exploring the relationships between money, human beings, and society.	<a href="#">Management, Commerce</a> Applying theories of economics to the real world.	<a href="#">Management Information Science</a> Studying the utilization of information within the
--	---	--

[Sociology](#)

<a href="#">Sociology</a> Focusing on the order and mechanisms of human society.	<a href="#">Social Welfare</a> Pursuing the happiness of individuals as well as humanity as a whole.	<a href="#">Tourism Studies</a> Studying tourism from various disciplinary perspectives.
---	---	---

[Media Studies](#)  
Finding the essence of diverse mass

JAPAN STUDY SUPPORT for information of studying at Universities and Graduate ... FOLLOW: [Facebook](#) [Twitter](#) LANGUAGE: [English](#)

Search for a Place to Study Useful information for studying abroad Messages from students

New Member Registration Login

Search for a university

School name  Search from map

WEB application List of Universities

Information

International Students Job Search Guide

Guide for Studying Abroad in Japan

Guide for Scholarship

Japanese Language Schools

Local Government Supporting International Students

"Studying in Japan is a great opportunity for your growth" Duann Weiming

Chuo University 李先露

Degree Courses in English

Waseda University In today's increasingly global societ...

Meikai University The Special Japanese Language Course offer...

Second step to study

University Graduate School Professional training college Junior college

News

2014/11/27 【吉林大学外国語学部中国語学科】12月13日(土)に留学生A...

2014/11/26 Osaka Employment Service center for Foreigners> Job ...

2014/11/25 「RRI大学」創設記念式典が11月25日実施

JAPAN STUDY SUPPORT is a website of Information for International Students that is jointly operated by the Asian Students Cultural Association and Benesse Corporation. There are about 1,300 universities, graduate schools, junior colleges, and vocational schools recruiting international

ABK Japanese Language Institute

# Information Sources for studying in Japan-4

## JPSS3 (ABK × Benesse)

### Useful School Search

#### Universities Accepting Online Application

Check universities accepting online application form overseas



#### List of Universities of WEB application performed

Web applications allow you take carry out application procedures over the internet. This includes the preparation of application forms and payment by credit card. This is more convenient and easy because application forms do not need to be sent by post, and bank payments are not necessary. For details, please see the page of each university.

**University: Sophia University**

Founded by the Jesuits in 1913, Sophia University has been a pioneer in international education in Japan, attracting students from all over the world. In 1949 Sophia established the first program in Japan taught entirely in English, and it continues to lead the Japanese academic world in offering international programs. Sophia is located in central Tokyo, near Japan's political, financial, business, and cultural centers.

[More information >](#)

**University: International Christian University (ICU)**

International Christian University (ICU) is a highly regarded liberal arts college providing outstanding bilingual education in both English and Japanese. ICU accepts students from all over the world and offers 31 majors as well as superlative Japanese Language Programs.

[More information >](#)

### Education using English

Lists universities providing academic degree courses taught in English

**Hiroshima Jogakuin University**

Hiroshima Jogakuin University was founded as Hiroshima Jogakkai in 1886 (in the 19th year of the Meiji Era) by a devout Christian, Rev Teikichi Sunamoto. He invited a missionary, Miss Nannie B. Gaines, to be the first principal. She was assisted by the Methodist Episcopal Church, located in the southern United States. Since then, Hiroshima Jogakuin University has been fostering an attitude of pacifism and humanity based on Christian principles. "Human education based on Christianity" is our founding spirit.

**Undergraduate Program**

[Liberal Arts](#)

**Waseda University**

In today's increasingly global society, people are expected to contribute widely to Japan and the world, and to act as leaders for the next generation.

Local governments that provide supports for international students

JAPAN STUDY SUPPORT for information of studying at Universities and Graduate Schools

**JAPAN STUDY SUPPORT**  
Information for foreign students

Search for: university

**WEB application**  
List of Universities

**Local Government**

**TOHOKU**  
Tohoku University

**Degree Courses in English**

**Search for a Place to Study**

[University](#) [Graduate School](#) [Postgraduate Training College](#) [Junior College](#)

**News**

2014/12/10 **YAMAGUCHI UNIVERSITY** x **GLOBAL JAPANESE STUDIES PROGRAM**

2014/12/17 **Yamaguchi University's Modern Japanese Studies Program**

2014/12/17 **Yamaguchi University** x **GLOBAL JAPANESE STUDIES PROGRAM**

2014/12/17 **Yamaguchi University** x **GLOBAL JAPANESE STUDIES PROGRAM**

JAPAN STUDY SUPPORT is a website of information for international students that is jointly operated by the Asian Students Cultural Association and Benesse Corporation. There are about 1,300 universities, graduate schools, junior colleges, and vocational schools recruiting international students in Japan. Information about them, together with information on scholarships, guides for living in Japan, and other related matters are presented in 8 languages: Japanese, English, simplified and traditional Chinese, Korean, Thai, Vietnamese, and Indonesian. This is the largest website of information for international students in Japan and has about 40,000 visitors per month. We provide international students information about universities and schools along with the related necessary information accurately and effectively. This site supports students in realizing their plans to study in Japan in a comprehensive way that meets their needs.

**ABK**  
Japan Language Institute

[Site Concept](#)



# Information Sources for studying in Japan-5

## JPSS4 (ABK × Benesse)

## Practical Advice & Scholarships

## Lifestyle guide for international students in Japan.

Find helpful information to ease concerns over studying abroad from preparation in your home country to graduation. Helpful hints for daily life including how to dispose of garbage, open a bank account, illness, accidents, or disasters.

# Job Hunting guide for international students

## Scholarship Serch

Scholarship name	<input type="text"/>	School name	<input type="text"/>
Recipients' residence	<input type="text"/>	School address	<input type="text"/>
Academic level	<input type="text"/>	Application deadline (month)	<input type="text"/>
Place of residence at the time of application	<input type="text"/>		

 Search with these conditions

The screenshot shows the JAPAN STUDY SUPPORT website. The left sidebar contains a search bar and several navigation links. Three links are circled in red: 'Students Job', 'Guide for Studying Abroad in Japan', and 'Guide for Scholarship'. The main content area features a large photo of Ms. Jie Wang, a woman with long brown hair, standing in front of a blue banner with the text '多摩大学' (Tama University) and '湘南キャンパス' (Shonan Campus). Below the photo is a section titled 'Degree Courses in English' with links to 'Hiroshima University', 'Jozeikan University', and 'Meiji University'. The right sidebar contains logos for 'YNU' (Yokohama National University), 'Meiji University', and 'Tokyo International University'. The bottom of the page includes a footer with the text 'JAPAN STUDY SUPPORT is a website of Information for International Students that is jointly operated by the Asian Students Cultural Association and Benesse Corporation.' and a logo for 'ABK Japanese Language Institute'.

Thank you all for your  
attention today!

contact information:

The Asian Students Cultural Association

Director, Secretary General

Mr. SHIRAISHI Katsumi

Asia Bunka Kaikan(ABK) 2-12-13,Bunkyo-ku,Tokyo, Japan

Phone : 03-3946-2171 FAX : 03-3946-7599

E-mail : [shiraishi@abk.or.jp](mailto:shiraishi@abk.or.jp)